

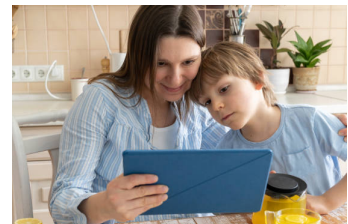


Quality Healthcare, Close to Home | Serving the Community Since 1975



## Common School-Based Health Services

- Acute sick care
- Sports medicine
- Asthma management
- Rapid flu/strep testing
- ADHD follow up care
- Care for LGBTQ Youth
- Adverse Childhood Experience screenings
- Teen pregnancy prevention
- Integrated social, emotional, and behavioral health
- Teacher healthcare needs



## Confidential Help

Many people In Orange County face economic and other challenges. Sometimes it's hard to make ends meet. As a community and school partner, SICHC is willing to go the extra mile to help children and families gain access to primary healthcare and confidential behavioral services. This includes helping students where they are, eliminating transportation Issues.

**Children attending Orange County Community Schools can now securely access high-quality healthcare while at school!** This service is now available through secure telehealth technology that allows virtual school-based visits. A new partnership with Southern Indiana Community Health Care (SICHC) and Orange County Community Schools allows SICHC providers to deliver healthcare through secure digital software called Tytocare, provided by SICHC. Visits will be held in a private space with school nursing staff and parents can attend in person or call in over the phone; parental written and verbal consent is required prior to any examination.

The secure telehealth option elevates accessible health care options for the community, and no child will be denied service because of lack of insurance.

### Why is this important?

Successful school-health partnerships share a common vision — creating an environment where



young citizens thrive in the classroom and beyond.

With its integration into the education environment, school-based health care contributes directly to a school's mission and allows for students to spend more quality time in class. Community employers and parents both benefit because parents can attend to

their child's health needs without having to take considerable time off from work. Students can receive quality healthcare without disruption. Further, if parents have chosen SICHC for their child's medical needs, students will also have local access to primary and behavioral health care at SICHC clinics when school is not in session. ▶



It should be noted that school-based health interim services do not replace the spectrum of recommended care from a child's regular family doctor. If a child already has a doctor, SICHC will share records and treatment plans with them for consistent care. With the needs of you and your student at the heart of our decision making, SICHC's health care professionals collaborate with school nurses to address the broad range of concerns and adverse experiences that affect students' healthy development.

SICHC physicians and providers are grateful for the opportunity to bring expertise and resources to improve the physical, social, emotional, and behavioral health of students at Paoli Community Schools.

## Payment Options

Not being able to afford a doctor can keep many families away from taking care of their health and finding health insurance coverage can be a difficult and complicated process. At SICHC we can help reduce your financial burden based on your ability to pay and no child will be denied services because of financial issues.

SICHC accepts health insurance, such as Medicaid or private health insurance and offers affordable care options including a sliding scale discount that we call Community Health Assistance Program (CHAP).

CHAP is available for both uninsured and under-insured patients and it is determined by your income and family size only. That means you can

have insurance coverage and still receive discounted care.

An application must be filled out to determine your eligibility.

Additionally, at no cost SICHC can direct you to a health insurance navigator who can assist by guiding you through the process of obtaining health insurance. They can review your options and help you locate the coverage that meets your needs.

If these options are still a barrier for you to access health care, we also have a program called More than Money. It allows anyone to volunteer in the community in exchange for credit toward an individual's medical bills at SICHC.

Please fill out an application if you would like to be considered for these programs. ■

## Meeting Unique Challenges

SICHC professionals hold considerable experience in helping families positively deal with challenging issues that impact a child's long-term health and wellbeing. SICHC is well-versed and skilled in confidently helping families address and find solutions to important issues. Positively dealing with physical and mental health challenges can lead to well-being and satisfying lives.